

# Ascend

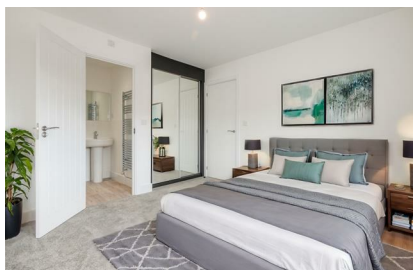
Built on higher standards



## 6 Stokers Drive Bolton BL6 5UE

- Detached home
- Bathroom, Ensuite & downstairs WC
- Available Now!
- Large garden
- Utility Room
- Three bedrooms
- Private Driveway for two vehicles
- Stunning new build home
- Open plan kitchen/dining room

## £1,525 PCM



Barton Quarter is a fantastic development offering 2 and 3 bedroom build to rent homes, located in the heart of a triangle between Chorley, Wigan Bolton.

The Mason is an ideal three bedroom family home, offering an ensuite to the main bedroom and a further family bathroom on the first floor.

The ground floor has plenty of space with a large open plan kitchen-dining area – the perfect entertaining space with French doors on to your private back garden. You also have a utility room with a further side door leading to the outside of the property. A decent sized living space is featured to the front of the property with a handy WC and two storage cupboards.

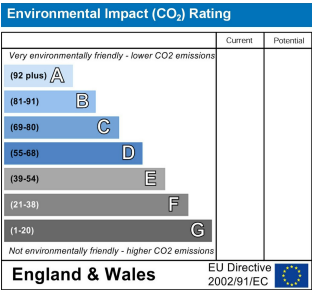
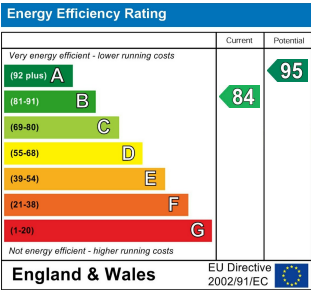
All three local towns are only all six miles away, with Preston and Manchester both under 40 minutes' away via the nearby M61, Barton Quarter also makes the ideal commuter choice – and surrounded by wonderful local countryside, for achieving an enviable work-life balance too.

The new neighbourhood has excellent local shopping and leisure amenities within walking distance. Lots of local shops are available on your doorstep including an independent greengrocers, butchers and banks, Cooperative and Sainsbury's Local branches, pharmacy and post-office. You will also find Aldi and Iceland nearby, with Asda Supercentre and Tesco Extra at the Middlebrook Retail Park.

Part of the transformation of the area for the 21st Century, with names from Next and M&S to Tui and TK Maxx, Middlebrook is a retail and leisure destination of impressive scale – complete with American, Italian and Tex-Mex diners and pizzerias, Hollywood Bowl and Vue.

Access the site by using postcode BL6 5UE.

Deposit £1750  
Unfurnished



# Ascend

Built on higher standards

0161 707 7584

192 Monton Road, Monton, Manchester, M30 9PY

monton.sales@ascendproperties.com,  
monton.lettings@ascendproperties.com  
www.ascendproperties.com



These particulars, whilst believed to be accurate are set out as a general outline only for guidance and do not constitute any part of an offer or contract. Intending purchasers should not rely on them as statements of representation of fact, but must satisfy themselves by inspection or otherwise as to their accuracy. No person in this firm's employment has the authority to make or give any representation or warranty in respect of the property

